

2019.1 ADDENDUM



HANDCRAFTED IN MONTREAL, CANADA
WWW.WETSTYLE.COM



WETMAR BIO™

MOOD p. 5



Bathtub

p. 8

LAB p. 11



Bathtubs

p. 15



**Drop-in Lavatories
Round Series**

p. 19



**Drop-in Lavatories
Square Series**

p. 20

SHOWERS

CUBE p. 38



Lavatories

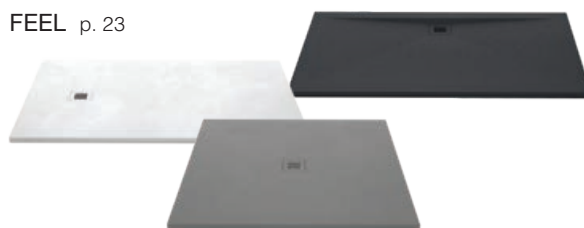
p. 38



**Vessel and
Undermount Sinks**

p. 39

FEEL p. 23



Textured Shower Bases

p. 2

FURNITURE

STELLÉ p. 33



Pedestal

p. 37

PRODUCT FEATURES KEY

BATHTUB

OD Plug & Bathe™ integrated overflow and drain included: polished chrome, brushed nickel, matte black, satin brass or white

SINK

O/F Optional overflow available: polished chrome, brushed nickel, matte black, satin brass or white

Holes Optional pre-drilled faucet holes: 1 hole/drain for mono faucet or 3 holes/drain for 8" c/c faucet

BR Wood bridge included, oak wenge shade standard

NEW

WHITE DRAIN CAP

Bathtubs and sinks from Mood and Lab collections are available with a white drain cap in True High Gloss or Matte finish.



The bathtub and sink features are written underneath each product's picture



MOOD

Design: Pierre Bélanger and WETSTYLE Design Lab

Keyword: Comfort

An invitation to dream... the Mood bathtub is based on a pair of offset ellipses resulting in a design that says fluidity and comfort. Its silhouette creates an air of relaxation in the bathroom.

In addition to its aesthetic qualities, Mood provides maximum comfort thanks to its reclining dual backs: a sitting position that is particularly conducive to reading, and a reclined option for pure relaxation. The elegant simplicity of the Mood blends seamlessly with both contemporary and traditional interiors, with its play of shapes creating a perfect balance between a well-anchored base and more refined curves. A thicker rim on one side adds to the originality of the design and also doubles as a storage shelf for body care products.

Mood is handcrafted in WETMAR BIO™, a robust, non-slip, thermo-insulating eco-material.

Available in True High Gloss™ or Matte finish.

Made of









Mood provides a roomy interior. The asymmetrical back rest design offers a recline option for relaxation on one side and a comfortable sitting position on the opposite side.



BMD 01 inch 70 x 32 x 23 $\frac{7}{16}$ mm 1777 x 813 x 596



OD



Bathtub BLB 02-PCWH, Matte
Drop-in lavatory VLBQS 2416-O-1-PC, Matte
Pedestal STL 2416D-1

LAB

Design: Pierre Bélanger and WETSTYLE Design Lab

Keyword: Pragmatic

Freshness and purity epitomize the Lab collection, a carefully studied design that meets the needs of the modern bathroom while bringing a dynamic and sensual feel to any space.

Lab bathtubs feature finely bevelled details and subtle curves. They are also intentionally inclined for the comfort of those who enjoy reading and relaxing in the bath. Designed to meet various space requirements, the bathtubs come in freestanding or wall-adjacent versions. With the freestanding option, the bath becomes a focal point in the room, and with the wall-adjacent version, a reduced footprint saves space for maximum freedom. Its wide deck is convenient for storing personal care products without clutter.

The Lab collection has several washbasins to match a variety of layouts and tastes. Models include Lab Round sinks whose curves match the collection's bathtubs and Lab Square sinks that integrate seamlessly with Stellé pedestals to form a minimalist and space-saving set.

Lab is handcrafted from WETMAR BiO™, a robust, non-slip, heat-insulating eco-material. It is available in True High Gloss™ or Matte finish.

Made of





Bathtub BLB 0101-PC, True High Gloss™
Drop-in lavatory VLBR8 820, True High Gloss™
Shown with custom furniture





Bathtub BLB 0102-MB, Matte



BLB 01 inch 59 ½ x 31 ½ x 24 mm 1511 x 800 x 610



OD



BLB 0101

Optional Access Trap for faucet installation and maintenance. Can be ordered centered or off-centered





BLB 02 inch 65 $\frac{7}{8}$ x 30 x 24 mm 1673 x 762 x 610



OD



Drop-in lavatory VLBRS 24-O-MB, Matte
Shown with custom furniture

LAB — Drop-in lavatories



VLBRS 820 inch 19 ³/₄ x 15 ³/₄ x 1 ¹/₂ mm 502 x 400 x 38



VLBRS 24 inch 23 ³/₄ x 17 ³/₄ x 1 ¹/₂ mm 603 x 451 x 38

O/F Holes

LAB — Drop-in lavatories



VLBQS 18 inch 11 $\frac{3}{4}$ x 17 $\frac{3}{4}$ x 1 $\frac{1}{2}$ mm 298 x 451 x 38

O/F Holes



VLBQS 816 inch 15 $\frac{3}{4}$ x 15 $\frac{3}{4}$ x 1 $\frac{1}{2}$ mm 400 x 400 x 38



VLBQS 16 inch 15 $\frac{3}{4}$ x 15 $\frac{3}{4}$ x 1 $\frac{1}{2}$ mm 400 x 400 x 38

O/F Holes



VLBQS 24 inch 23 $\frac{3}{4}$ x 15 $\frac{3}{4}$ x 1 $\frac{1}{2}$ mm 603 x 400 x 38

O/F Holes



Shower bases

DFL 6030E, White Slate
DFL 6032E, White Concrete
DFL 6036O, Black Slate
DFL 6642C, Grey Concrete

FEEL

Design: WETSTYLE Design Lab

Keyword: Sensation

Created from an innovative, high-density composite material that evokes the appearance of natural stone, the Feel collection emphasizes tactile pleasures underfoot. The uniquely pleasing texture of this line of showers comes from a manufacturing process that creates the appearance of slate and concrete in high definition.

These streamlined bases are suitable for all bathroom types as they can be cut at the factory or even by the installer directly on site; a major asset when adapting to non-standard dimensions and specific configurations, such as bypassing a column.

The matte finish paired with Feel's clean, sleek look awakens the senses and heightens the experience of relaxation and rejuvenation in the shower. The collection is available in neutral shades of white, gray and black.

100% tailor-made. Your shower your way.

From the dimensions to the hue, to drain grid and texture, Feel Shower Bases can be completely customized for medium and large projects. The product design can be adapted to your sense of style and aesthetics, making it one of a kind. It is even possible to print an image directly on the base. Contact the sales team for more details.



Shower base DFL 7242C, Black Slate
Drop-in sink VLBR5 820, Matte
Shown with custom vanity





Shower base DFL 6036E, White Concrete
Cube Shower Seat STC 24WM-M-5
Drop-in lavatory VLBQS 2416-O-8-PC, Matte
Pedestal STL 2416D-36

FEEL — Textured Shower Bases

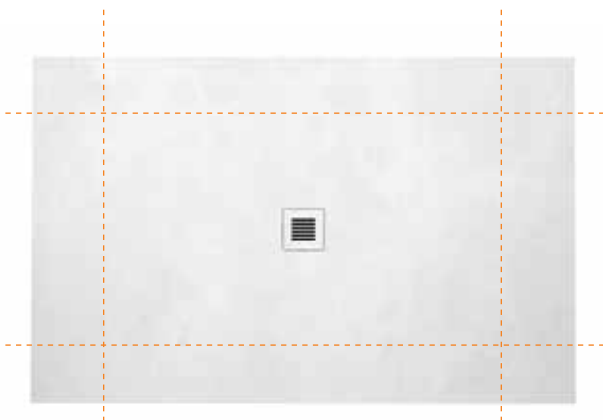


Feel shower bases can be cut on-site to fit non-standard dimensions, angled walls or to bypass a column. If only straight cuts are required, the bases can be ordered pre-cut from the factory. Model shown: DFL 6036O in Black Slate

CUTTING OPTIONS

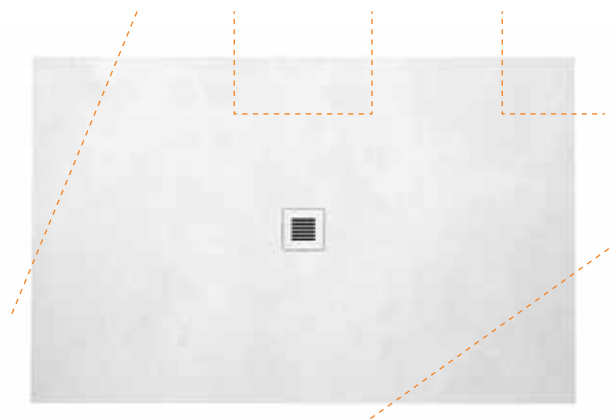
At factory:

done at WETSTYLE's factory, the shower base can be cut to your specified size



At jobsite:

using a diamond blade, the shower bases can easily be cut by the contractor to ensure it fits the specificities of the space... almost endless possibilities





Shower base DFL 4848C, Grey Concrete
Cube shower bench STC14FS-M-5

WHY NOT FEEL IT?



REALISTIC TEXTURES

Made from composite stone using a unique moulding process that can replicate textures with incredible realism



ANTI-SLIP

The textures provide high anti-slip properties to the shower bases, combining function with aesthetics



STONE-LIKE STRENGTH

The high density of the material provides a stone-like strength to the shower bases



EASY MAINTENANCE

Antibacterial treatment certified by ISO-NPG-H (high avoidance of hydrolysis) prevents corrosion of the material



Easy to clean, no grout lines where soap scum can accumulate, simply use a mild and neutral cleaning agent



Repairable: scratches and dents can easily be repaired using a repair kit

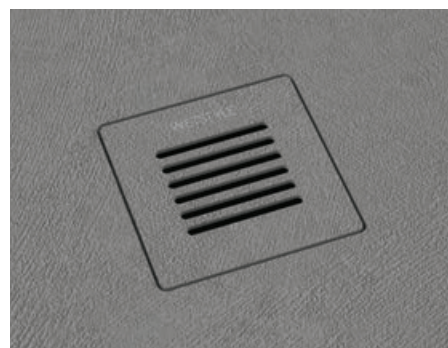
MASS COLORATION

The material bears the same color throughout



MATCHING DRAIN COVER

The supplied drain cover matches the shower base's color and texture, for a unified look



INSTALLATION

- Quick install: save on installation time and costs versus a custom tiles-in shower tray
- One piece for reduced risk of water leaks: no seams, no joints, no grout
- No floor waterproof membrane, no hot mopping, no slope construction required
- Designed to work with standard drain rough-in
- Deck wide enough to support glass walls or rolling/swinging doors

INSTALLATION OPTIONS

Above-floor



Recessed – flush with floor

 ADA-compliant

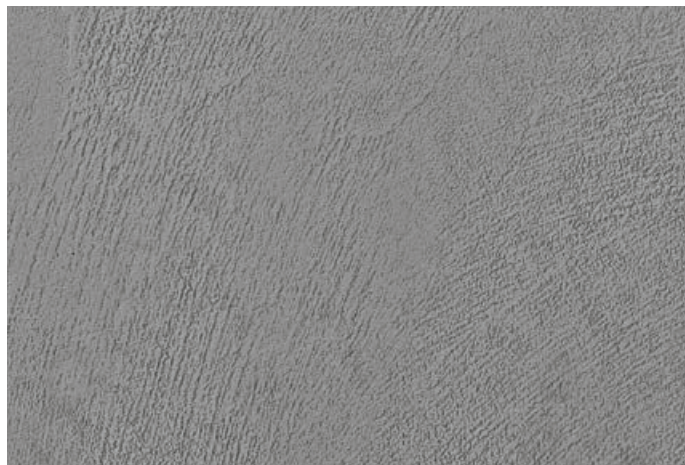


TEXTURES AND COLORS

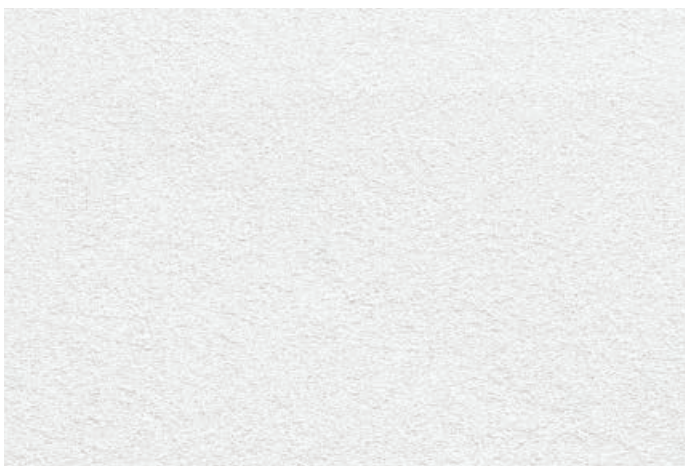
White Concrete



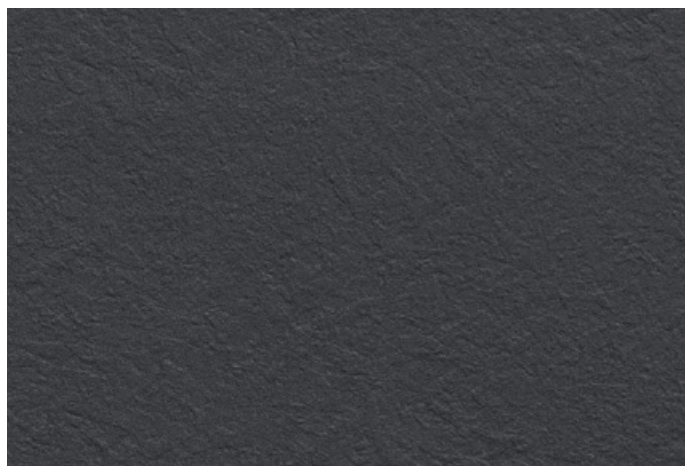
Grey Concrete



White Slate



Black Slate



CUT-TO-SIZE TO FIT YOUR SPACE

The Feel shower bases can be cut to fit odd-size bathrooms or, for example, to work around a corner beam. Bathrooms that used to necessitate a tiled-in shower tray can now benefit from pre-cast shower bases.

FOR PROJECTS

Full customization:

is possible for 10+ unit projects: choose your color, texture and size.
For color match, provide a color code or sample.



Stellé in Walnut Natural

Pedestal STL 1812D

Drop-in lavatory VLBQS 18-O-1-MB, Matte

STELLÉ

Design: Pierre Bélanger and WETSTYLE Design Lab

Keyword: Sharp

Inspired by monoliths, the Stellé pedestal creates a statement while still remaining compact. It fits easily into a small powder room or bathroom, due to its reduced dimensions. Stellé sets itself apart with a high-quality, impeccable finish, inside and out. These pieces are offered in a wide range of colors and wood finishes, including walnut, oak, torrifed eucalyptus and lacquer.

Stellé makes the perfect companion to the washbasins in the Lab collection, creating a timeless and urban look.

Made of





Stellé in Oak Stone Harbour Grey

Pedestal STL 1812D

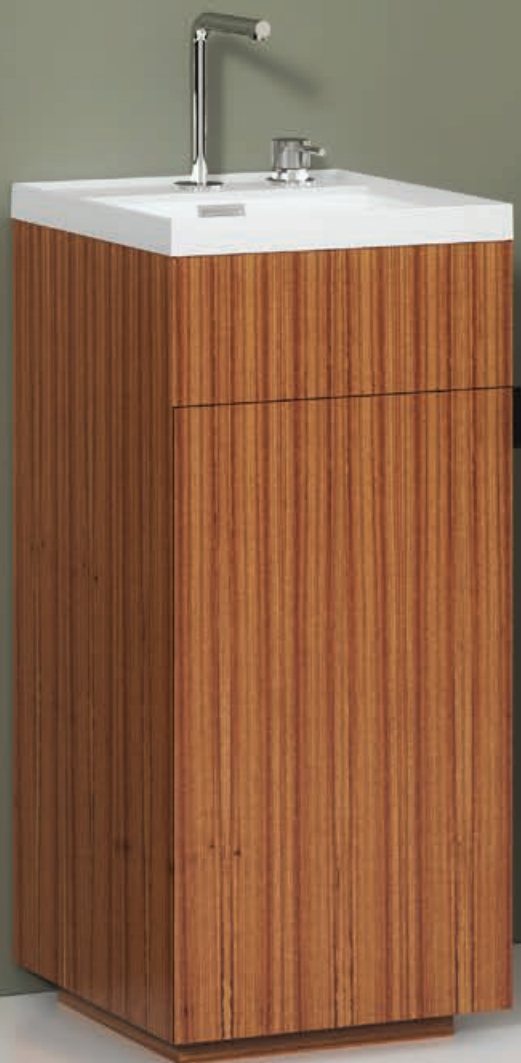
Drop-in lavatory VLBQS 18-O-1-MB, Matte



Stellé in Oak Smoked

Pedestal STL 1616

Drop-in lavatory VLBQS 816, Matte



Stellé in Mozambique

Pedestal STL 1616D

Drop-in lavatory VLBQS 16-O-PC, Matte



Stellé in Torried Eucalyptus

Pedestal STL 2416D

Drop-in lavatory VLBQS 24-O-8-PC, Matte



Stellé in Oak Coffee Bean
Pedestal STL 1616
Drop-in lavatory VLBQS 816, Matte

STELLÉ — Pedestals



The model with a door offers additional storage and a fully finished interior. The stainless steel handle comes in a Matte Black powder-coated finish. Stellé Pedestal is shown here in Oak Natural.

CUBE — Lavatories



VC 48S (S = SINGLE DRAIN) inch 48 x 22 x 4 mm 1219 x 559 x 102 O/F Holes BR



VCS 48S (S = SINGLE DRAIN) inch 48 x 22 x 2 mm 1219 x 559 x 51 O/F Holes BR

CUBE — Undermount and Vessel Sink



VC 842U inch 42 x 15 x 4 mm 610 x 508 x 16

O/F BR



VC 842A inch 42 x 15 x 4 mm 610 x 508 x 16

O/F BR



www.WETSTYLE.COM - Montreal - Canada
Tel. 1 888.536.9001 - service@wetstyle.com



SKU: CAT-2019.1-ADDENDUM

R.06/19__PRINTED IN CANADA__ Copyright 2019, WET Manufacturing Inc. Cube, Ove, Be, Frame, Couture, Déco, Element Rafiné, Straight, Wave, Cloud, Tulip, Mood, Lab, Feel, Stelli collections and word marks, COL-DEC, COL-WALL, WETMAR, WETMAR BIO, True High Gloss, The Purest Form of Luxury and WETSTYLE are trademarks of WET Manufacturing Inc. Certain designs depicted in this brochure are the subject of registered or pending Canadian Industrial Designs and US Design Patents owned by WET Manufacturing Inc.